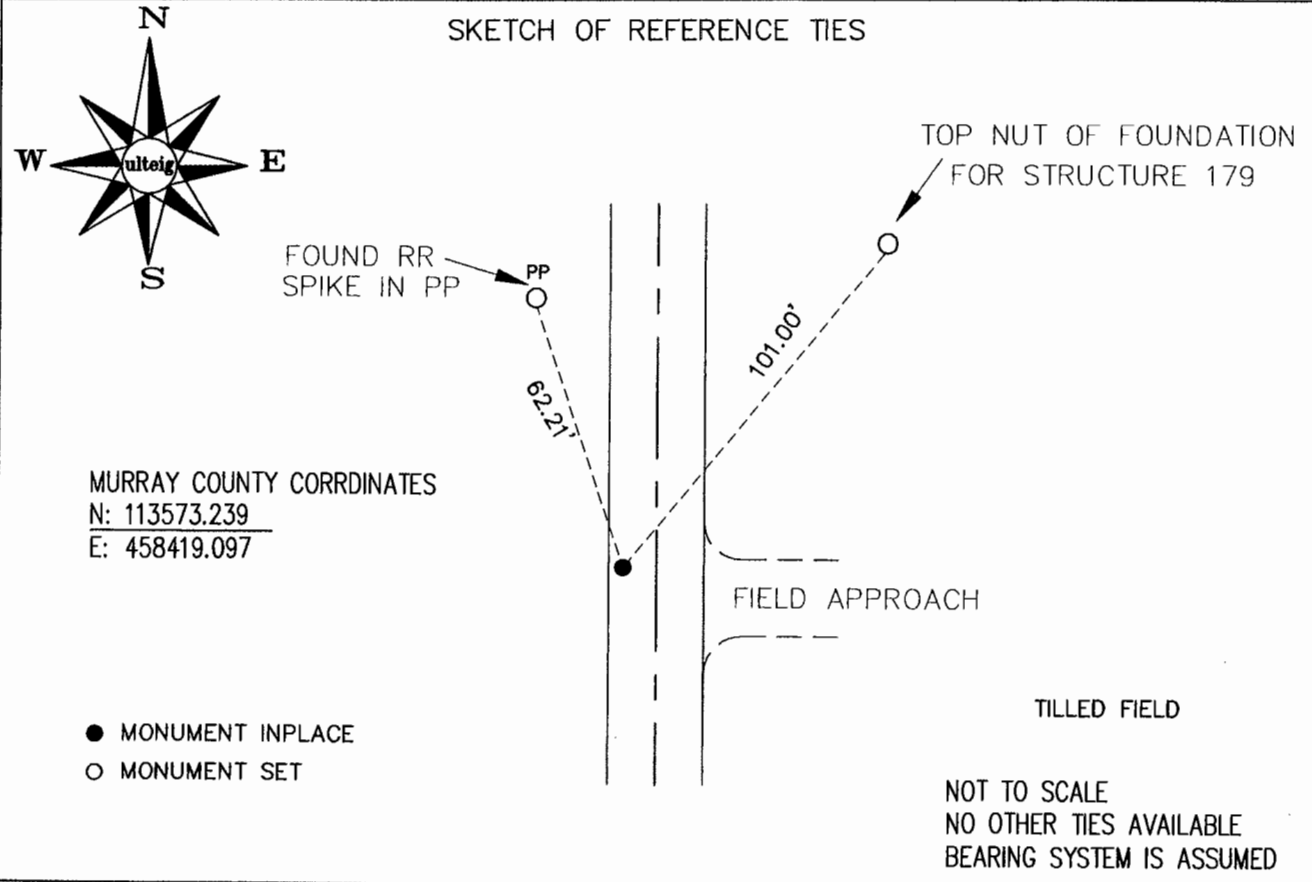


CERTIFICATE OF LOCATION OF GOVERNMENT CORNER

EAST 1/4 Corner of Section 19, Township 105N, Range 42W, 5TH P.M.
 STATE OF MINNESOTA, County of MURRAY

At the corner location shown on the sketch:

- On 2-13-08 found a SPIKE WITH CHASER ON WEST SIDE OF ROAD
DATE
- left monument as found, lowered monument, removed monument (explain)
- On _____ placed a _____
DATE



Statement of evidence relative to this corner location is on back of page.

I hereby certify that this document and the data contained herein was prepared by me or under my direct supervision.

[Signature] 2-28-08
SURVEYOR'S NAME DATE

Registration No. 40827

Land Surveyor, Professional Engineer
 County Surveyor, County Engineer

OFFICE OF THE COUNTY RECORDER
 County of MURRAY

I hereby certify that this document was filed in the Co. Recorders office at _____ .M. on the _____ day of _____ A.D., 20____

County Recorder [Signature]
 By _____, Deputy

DOCUMENT NO. MAR 18 2008

STATEMENT OF EVIDENCE:

EAST 1/4 CORNER, SECTION 19, T.105 N., R.42 W.,
MURRAY COUNTY, MINNESOTA

- 1861 D.W. Wellman & S.S. Smoot, U.S. Deputy Surveyors, monumented corner.
- 2008 Ulteig Engineers, Inc., Survey Crew, Bob Kohler Party Chief, found a spike with chaser attached on the west side of the road.
Ties: NW-62.21' to a RR Spike in power pole;
NE-101.00' to the top nut of the most southerly foundation bolt on Structure 179.